

ceramica  
**SANT'AGOSTINO**

**Rivestimenti in pasta bianca**

White body wall tiles  
Revêtements en pâte blanche  
Weisscherbige wandfliesen

**Chic**





# Chic

RIVESTIMENTI IN PASTA BIANCA  
WHITE BODY WALL TILES  
REVÊTEMENTS EN PÂTE BLANCHE  
WEISSSCHERBIGE WANDFLIESEN

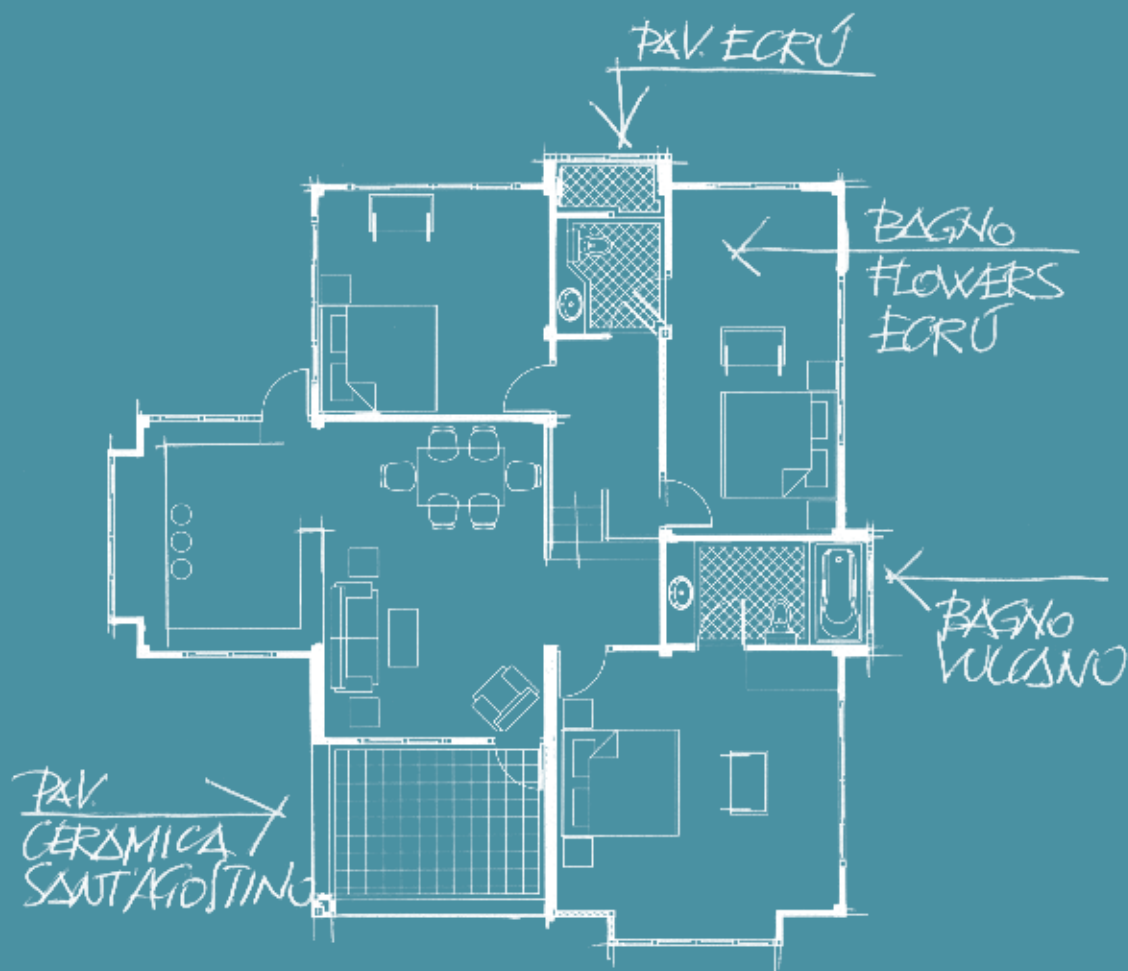
*25x65 - 10"x25 1/2"*



# Chic

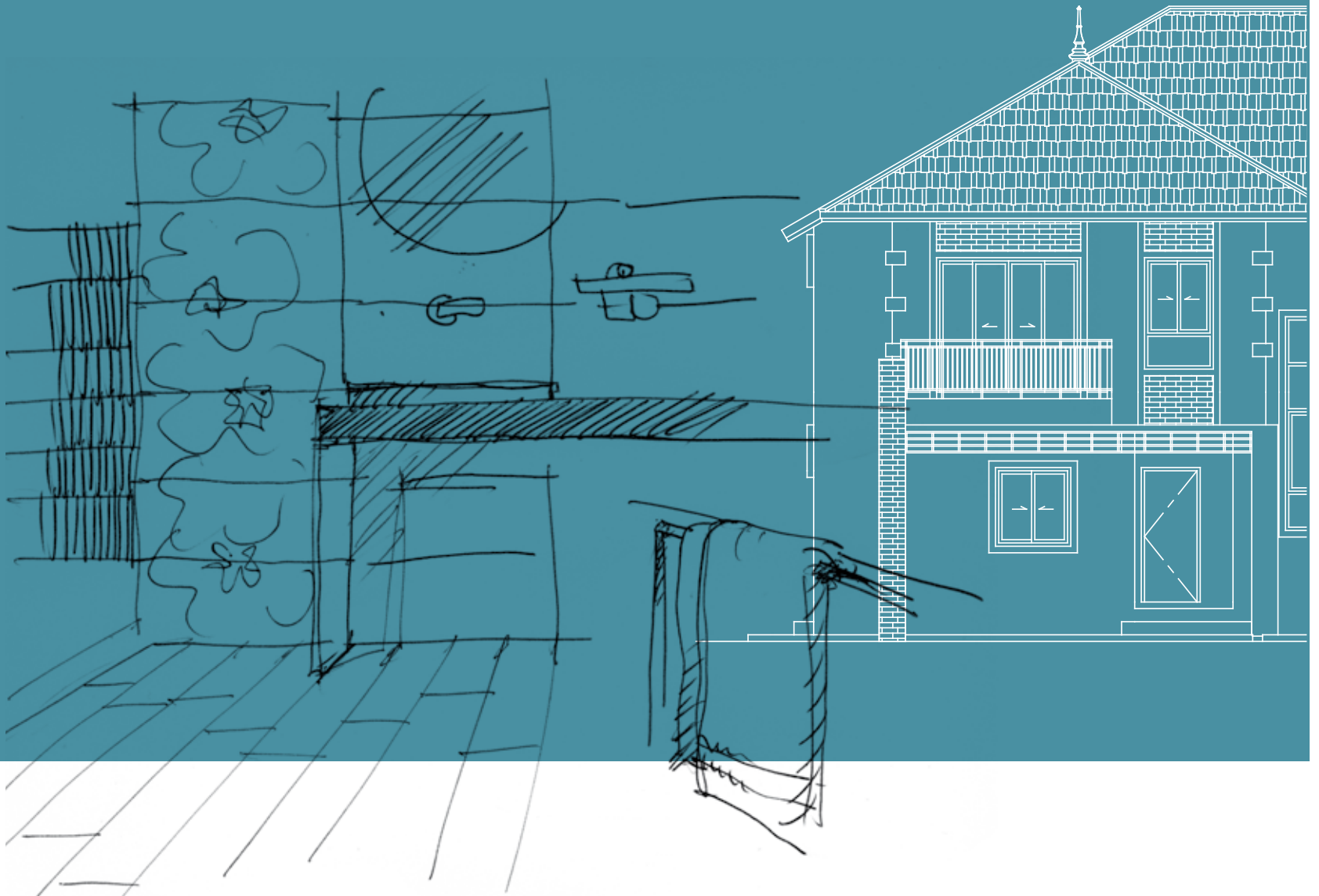
OGGI IL BAGNO È DIVENTATO UNO SPAZIO MOLTO IMPORTANTE CHE DEVE AVERE LE STESSE QUALITÀ DI FINITURA E DI ARREDO DEGLI ALTRI AMBIENTI “NOBILI” DELLA CASA.

NOWADAYS THE BATHROOM IS A VERY IMPORTANT SPACE THAT MUST HAVE THE SAME FINISHING AND FURNISHING QUALITIES AS THE OTHER “NOBLE” ROOMS IN THE HOUSE. IT IS A SPACE DEDICATED TO WELL-BEING WHERE THE PLEASURE OF THE SIMPLE DAILY ACTIONS BECOMES IMPORTANT. IN THE BATHROOM WE NEED TO FIND THE SAME ATMOSPHERE AND REFINED ELEGANCE AS IN THE OTHER ROOMS OF OUR HOME.



La collezione Chic risponde a questo imperativo proponendo allo user-end una vasta gamma di colori originali, scelti in linea con le più attuali tendenze dell'arredamento: tinte piene, ma dall'intensità discreta che spaziano con disinvoltura dai toni naturali e delicati del bianco e dell'avorio a quelli forti e decisi del turchese e del lilla, passando per le sofisticate modulazioni del beige e del grigio scuro, realizzate in Digital Technology.

The Chic collection achieves this by offering the end user a wide range of original colours, selected in line with the most current furnishing trends. Full colours, yet with a subtle intensity, that move easily from natural, delicate shades of white and ivory to strong and bold turquoise and lilac via sophisticated modulations of beige and dark grey. These colours are created using Digital Technology.





# Chic

## IL RITO DELLA DOCCIA: UNA PIOGGIA DI BENESSERE DA ASSAPORARE IN UN AMBIENTE RAFFINATO E CONTEMPORANEO.

THE RITE OF SHOWER: A RAIN OF COMFORT TO BE TASTED IN A REFINED AND CONTEMPORARY ENVIRONMENT.

Chic è la nuova collezione ad uso rivestimento di Ceramica Sant'Agostino nata per soddisfare le esigenze di chi desidera arredare la propria casa con stile e personalità.

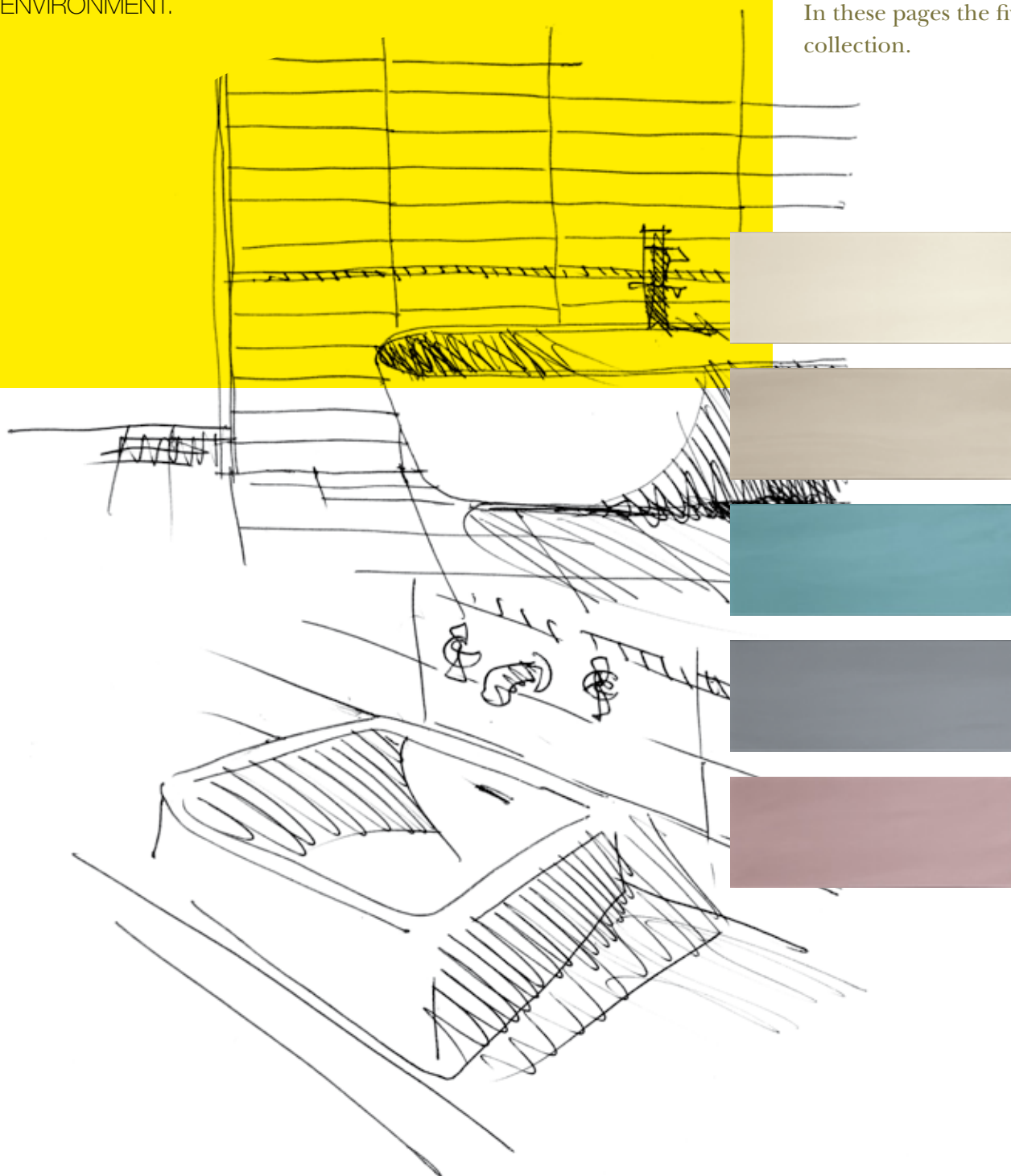
La parola d'ordine? Il colore. Senza rinunciare all'eleganza. In questa pagina le cinque tinte base protagoniste della collezione.

Chic is the new cladding collection from Ceramica Sant'Agostino created to meet the demands of those seeking to furnish their home with style and personality.

The password? Colour.

Without compromising on elegance.

In these pages the five basic colours of the collection.













Chic Avorio  
Chic Vulcano  
Tracce Vulcano  
Metal

Nature Grey 20120



25x65 - 10"x25<sup>1/2</sup>"



I PICCOLI LISTELLI VERTICALI CHE  
DISEGNANO IL MOSAICO TRACCE,  
ESALTANO LA VIVACITÀ DEI RIFLESSI  
CREATI DALLA LUCE.

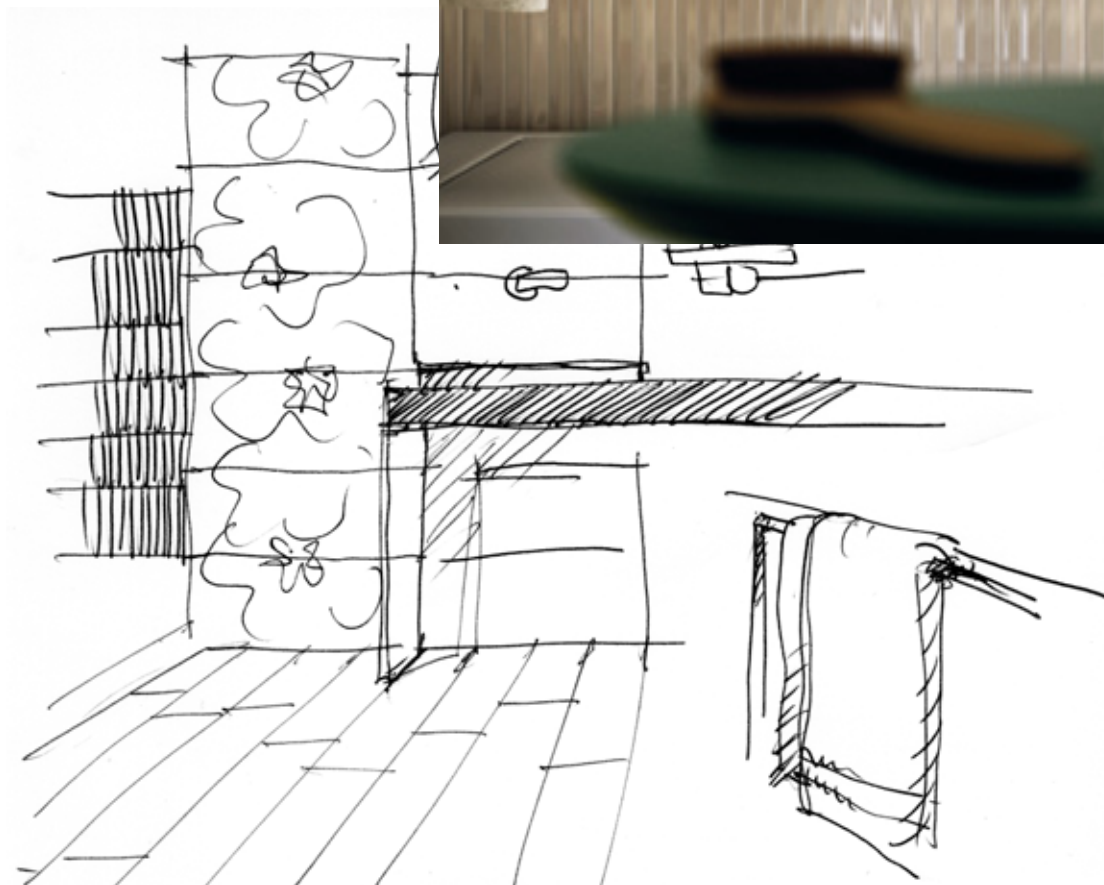
THE SMALL VERTICAL STRIP TILES  
- USED TO DESIGN THE  
TRACCE MOSAIC -  
ENHANCE THE BRILLIANCE OF  
LIGHT REFLECTIONS.



# Chic

RITMI GEOMETRICI E MOTIVI FLOREALI SI AVVICENDANO IN UN GIOCO CONTINUO DI RIGORE E CREATIVITÀ.

GEOMETRIC RHYTHMS AND FLORAL PATTERNS COME TOGETHER IN A CONTINUAL PLAY ON HARSHNESS AND CREATIVITY.







# Chic

Chic Avorio  
Chic Ecrù  
Tracce Ecrù  
Flowers Ecrù  
Nastro Ecrù

Nature Grey 15120





**LA PARETE DOCCIA È  
PERSONALIZZATA DALLE MORBIDE  
LINEE DELLA MATTONELLA TRACCE:  
IL FORMATO È 25X65 E LE PICCOLE  
FORMELLE VERTICALI SONO  
OTTENUTE CON LA PREINCISIONE.**

THE SHOWER WALL IS CUSTOMIZED  
BY THE SOFT LINES OF THE TILE  
TRACCE: THE SIZE IS 25X65 AND  
THE SMALL VERTICAL STRIPS ARE  
OBTAINED WITH PRE-CUTTING  
TECHNIQUE.





ANCHE IL PAVIMENTO COORDINATO IN GRES PORCELLANATO È STUDIATO PER AMBIENTI DALL'ANIMA CONTEMPORANEA E DINAMICA. TUTTO NEL NOME DI UNO STILE, RIGOROSAMENTE, CHIC.

MATCHING PORCELAIN STONEWARE FLOORING HAS ALSO BEEN DESIGNED FOR LIVING ENVIRONMENTS WITH A CONTEMPORARY AND ENERGETIC FEEL. ALL IN THE NAME OF A STRICTLY CHIC STYLE.



Chic Ecrù  
Doga  
Banda Ecrù

Basic Ecrù



25x65 - 10"x25<sup>1/2</sup>"

ESTREMAMENTE CURATA IN OGNI  
DETTAGLIO, LA LINEA CHIC È  
ARRICCHITA DA UN'ATTENTA RICERCA  
DI DECORI CHE NE RIFLETTONO ED  
ESALTANO TUTTA LA PERSONALITÀ E  
LA RAFFINATEZZA.

ATTENTION HAS BEEN GIVEN TO EVERY  
DETAIL OF THE CHIC LINE, ENRICHING  
IT WITH CAREFUL RESEARCH INTO  
DECORATIONS THAT REFLECT AND  
ENHANCE ALL OF ITS PERSONALITY  
AND SOPHISTICATION.

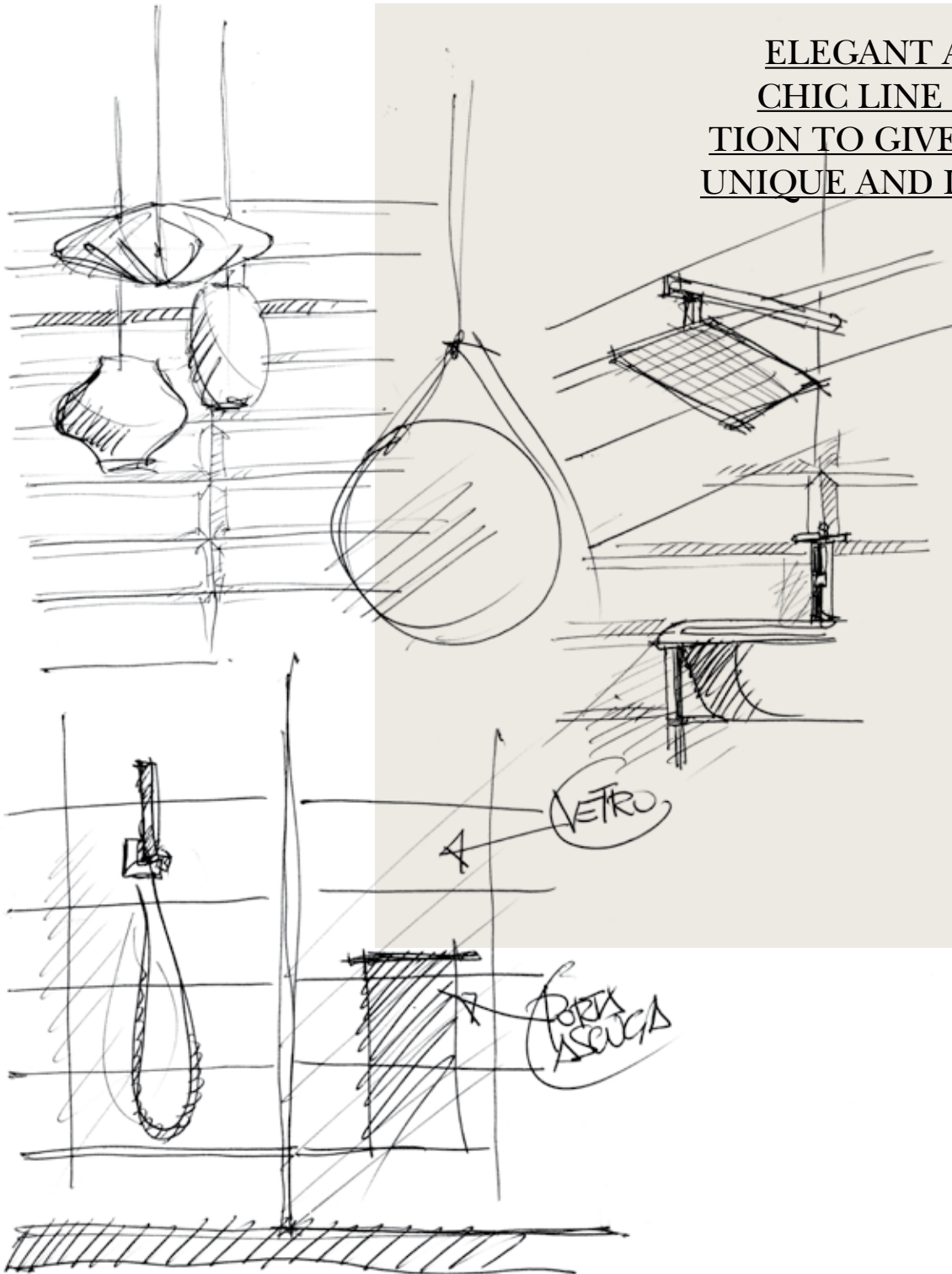




# Chic

ELEGANTE E COLORATA, LA LINEA CHIC È LA SOLUZIONE IDEALE PER CONFERIRE AD OGNI AMBIENTE UNO STILE UNICO E INIMITABILE.

ELEGANT AND COLOURFUL, THE CHIC LINE IS THE PERFECT SOLUTION TO GIVE ANY ENVIRONMENT A UNIQUE AND INCOMPARABLE STYLE.







Chic Avorio  
Chic Malva  
Brillante Avorio  
Raso Malva

Nature Grey 15120  
Basic Malva



# Chic

Chic Avorio

Chic Malva

Brillante Avorio

Raso Malva

Nature Grey 15120

Basic Malva







ESTREMAMENTE CURATA IN OGNI  
DETTAGLIO, LA LINEA CHIC È ARRICCHITA  
DA UN'ATTENTA RICERCA DI DECORI CHE  
NE RIFLETTONO ED ESALTANO TUTTA LA  
PERSONALITÀ E LA RAFFINATEZZA.

ATTENTION HAS BEEN GIVEN TO  
EVERY DETAIL OF THE CHIC LINE,  
ENRICHING IT WITH CAREFUL  
RESEARCH INTO DECORATIONS THAT  
REFLECT AND ENHANCE ALL OF ITS  
PERSONALITY AND SOPHISTICATION.



Chic Avorio  
Chic Oceano  
Brillante Oceano  
Solitario  
Nastro Oceano

Wood Brown 15120













# Technical Information

# Chic



# Chic

Piastrelle in  
pasta bianca

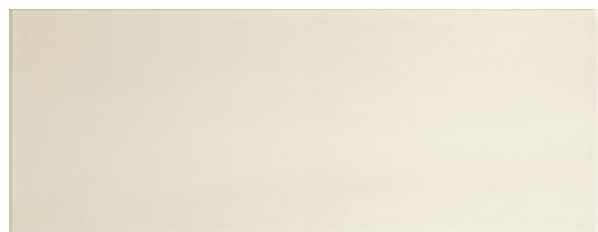
White  
body tiles

Weiss-scherbige  
fliesen

Carreaux en  
pate blanche

плитка из  
белой глины

EN 14411 APPENDICE L BIII GL



**54 Chic Avorio**

25x65 - 10"x25<sup>1/2</sup>"



**56 Chic Ecrù**

25x65 - 10"x25<sup>1/2</sup>"



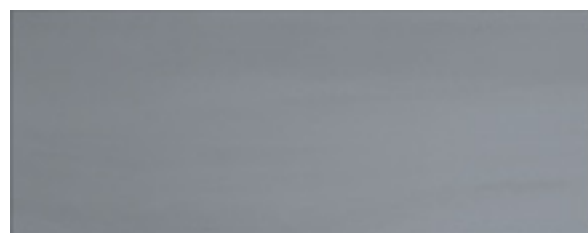
**56 Chic Oceano**

25x65 - 10"x25<sup>1/2</sup>"



**56 Chic Malva**

25x65 - 10"x25<sup>1/2</sup>"



**56 Chic Vulcano**

25x65 - 10"x25<sup>1/2</sup>"



25x65 - 10"x25<sup>1/2</sup>"

9,4 mm



64 Brillante Avorio

25x65 - 10"x25<sup>1/2</sup>"



66 Tracce Avorio

25x65 - 10"x25<sup>1/2</sup>"



64 Brillante Ecrù

25x65 - 10"x25<sup>1/2</sup>"



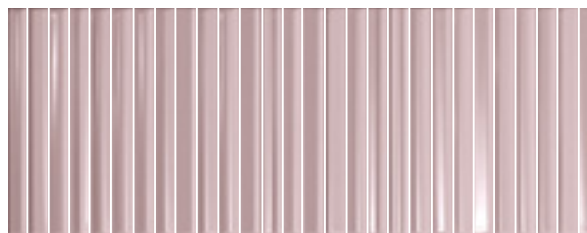
66 Tracce Ecrù

25x65 - 10"x25<sup>1/2</sup>"



64 Brillante Malva

25x65 - 10"x25<sup>1/2</sup>"



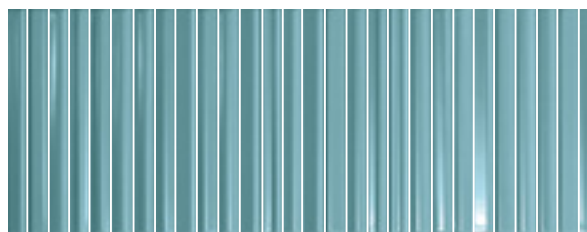
66 Tracce Malva

25x65 - 10"x25<sup>1/2</sup>"



64 Brillante Oceano

25x65 - 10"x25<sup>1/2</sup>"



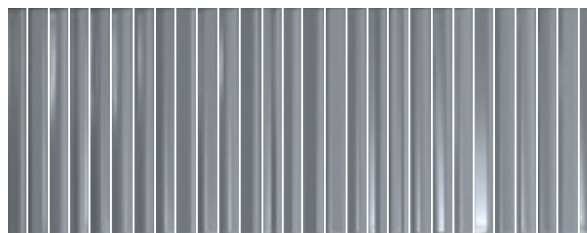
66 Tracce Oceano

25x65 - 10"x25<sup>1/2</sup>"



64 Brillante Vulcano

25x65 - 10"x25<sup>1/2</sup>"



66 Tracce Vulcano

25x65 - 10"x25<sup>1/2</sup>"

# Chic

Piastrelle in  
pasta bianca

White  
body tiles

Weisscherbige  
fliesen

Carreaux en  
pate blanche

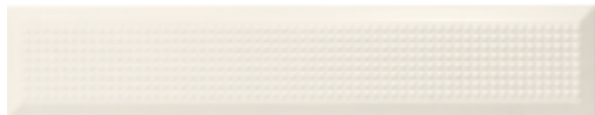
плитка из  
белой глины

EN 14411 APPENDICE L BIII GL



**64 Doga**

25x65 - 10"x25<sup>1/2</sup>"



**30 Solitario**

12,5x65 - 5"x25<sup>1/2</sup>"



**21 Banda Avorio**

2,5x65 - 1"x25<sup>1/2</sup>"



**21 Banda Ecrù**

2,5x65 - 1"x25<sup>1/2</sup>"



**21 Banda Malva**

2,5x65 - 1"x25<sup>1/2</sup>"



**21 Banda Oceano**

2,5x65 - 1"x25<sup>1/2</sup>"



**21 Banda Vulcano**

2,5x65 - 1"x25<sup>1/2</sup>"



**26 Raso Ecrù**

3x65 - 1<sup>1/4</sup>"x25<sup>1/2</sup>"



**26 Raso Malva**

3x65 - 1<sup>1/4</sup>"x25<sup>1/2</sup>"



**26 Raso Oceano**

3x65 - 1<sup>1/4</sup>"x25<sup>1/2</sup>"



**26 Raso Vulcano**

3x65 - 1<sup>1/4</sup>"x25<sup>1/2</sup>"



**21 Nastro Ecrù**

1x65 - 2/5"x25<sup>1/2</sup>"



**21 Nastro Malva**

1x65 - 2/5"x25<sup>1/2</sup>"



**21 Nastro Oceano**

1x65 - 2/5"x25<sup>1/2</sup>"



**21 Nastro Vulcano**

1x65 - 2/5"x25<sup>1/2</sup>"



**27 Metal**

0,6x65 - 1/4"x25<sup>1/2</sup>"



25x65 - 10"x25 1/2"

9,4 mm



25x65 - 10"x25 1/2"

**73 Tracce Lux**



• All'interno delle scatole sono presenti pezzi con grafiche diverse che vanno posate in modo assolutamente casuale. Questo permette di avere un miglior risultato estetico.

• The pieces inside the boxes have different drawings that have to be laid in a random way. This allows to get a better aesthetic result.

• In den Schachteln befinden sich Stücke mit unterschiedlichen Grafiken, die ganz nach Zufall verlegt werden. Dies ermöglicht ein besseres ästhetisches Ergebnis.

• Dans les boîtes, il y a des carreaux qui ont un aspect différent, qui doivent être posés d'une façon aléatoire. Ce type de pose permet d'avoir un meilleur résultat esthétique.

• В коробках находится плитка с различными рисунками, которую следует укладывать наугад. Это позволит добиться лучшего эстетического результата.



# Chic

Piastrelle in  
pasta bianca

White  
body tiles

Weisscherbige  
fliesen

Carreaux en  
pate blanche

плитка из  
белой глины

EN 14411 APPENDICE L BIII GL



25x65 - 10"x25 1/2"

**52 Flowers Ecrù**

Comp. 3 pz.



25x65 - 10"x25 1/2"

**52 Flowers Malva**

Comp. 3 pz.





25x65 - 10"x25<sup>1/2</sup>"

9,4 mm



25x65 - 10"x25<sup>1/2</sup>"  
**52 Flowers Oceano**

Comp. 3 pz.



25x65 - 10"x25<sup>1/2</sup>"  
**52 Flowers Vulcano**

Comp. 3 pz.

# Chic

Pavimento coordinato  
in Gres Porcellanato

Rettificata

Combined Porcelain  
floor-tiles

Rectified

Feinsteinzeug passend  
zu Wandfliesen

Kalibriert

Coordonnés aux carreaux  
de sol en grès cérame

Rectifié

Напольная плитка из  
Керамогранита

Ректифицированная

EN 14411 APPENDICE G Bla GL

digital technology

45x45 - 18" x 18"

3 RET 10 mm



**82 Basic Avorio**

45x45 - 18"x 18"



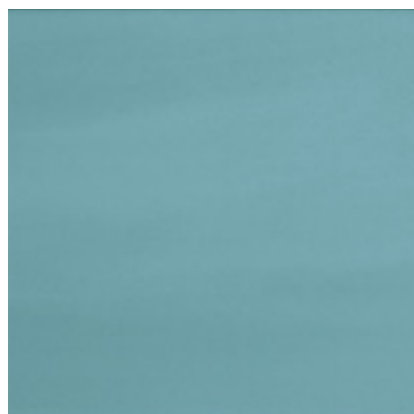
**82 Basic Ecrù**

45x45 - 18"x 18"



**82 Basic Malva**

45x45 - 18"x 18"



**82 Basic Oceano**

45x45 - 18"x 18"



**82 Basic Vulcano**

45x45 - 18"x 18"



**Pezzi speciali** - Special Pieces - Spezial-Stücke - Pièces Speciales - Специальных Элементов



1,5x25 - 3/4"x10"

**18 Quarter Round Chic**

Avorio  
Ecrù  
Malva  
Oceano  
Perla  
Vulcano  
Doga

**Imballi e pesi** - Packing and weights - Verpackungen und gewichte - Emballage et poids - Вес и упаковка

| Formato<br>Size<br>форматы<br>(cm) | Scatola/Box  |  |   |                                     | Pallet  |                               |                    | Montato<br>su rete<br>On net<br>Auf Netz<br>Sur trame<br>Собрана на<br>сетке | Nome<br>Name<br>Nom<br>Название | Formato<br>Size<br>форматы<br>(cm) | Pz./Scat.<br>Pcs/Box<br>Stck/Kart.<br>Pcs/Boite<br>Шт/Кор. | Pezzi comp<br>Pcs/set<br>Stck/set<br>Pcs/set<br>Штук в<br>композиции | Comp/Scat.<br>Set/Box<br>Set/Kart.<br>Dec/Boite<br>Композиций<br>в коробке | Pannelli/Scat.<br>Panels/Box<br>Pannele/Kart.<br>Pann./Boite<br>Панелей в<br>коробке |
|------------------------------------|--|--|---|-------------------------------------|---|-------------------------------|--------------------|--|---------------------------------|------------------------------------|--|--|--|--|
|                                    | Pz./Scat.<br>Pcs/Box<br>Stck/Kart.<br>Pcs/Boite<br>Шт/Кор. | mq/Scat.<br>Sqm/Box<br>Qm/Kart.<br>Mc/Boite<br>Кв.м/кор. | Kg/Scat.<br>Kg/Box<br>Kg/Kart.<br>Kg/Boite<br>Кг/кор. | Kg/mq<br>Sqm/mq<br>Kg/mq<br>Kг в/Mq | Scatole<br>Boxes<br>Kart<br>Boites<br>Коробок в<br>палете | mq<br>Sqm<br>Qm<br>Mc<br>Кв.м | Kg.<br>кг в палете |  |                                 |                                    |  |  |  |  |
| ❖ <b>25x65</b>                     | 6  | 0,98   | 17  | 17,3                                | 60  | 58,8                          | 1020               |  | <b>Flowers</b>                  | 25x65                              | 3  | 1  |  |  |
| <b>25x65</b> Brillante/Tracce      | 5  | 0,81   | 16,4  | 20,3                                | 36  | 29,2                          | 592                |  | <b>Banda</b>                    | 2,5x65                             | 6  |  |  |  |
| <b>45x45</b> Basic                 | 6  | 1,22   | 27,5  | 22,5                                | 26  | 31,7                          | 714                |  | <b>Raso</b>                     | 3x65                               | 6  |  |  |  |
|                                    |  |  |   |                                     |   |                               |                    |  | <b>Nastro</b>                   | 1x65                               | 6  |  |  |  |
|                                    |  |  |   |                                     |   |                               |                    |  | <b>Metal</b>                    | 0,6x65                             | 6  |  |  |  |

❖ Lotto minimo di vendita: 2 scatole (o multipli di 2 scatole)  
❖ Minimum sale unit: 2 cartons (or multiples of 2 cartons)

❖ Nicht weniger als: 2 Packete (oder vielfach von 2 Packete)  
❖ Lot minime de vente: 2 boites (ou multiples de 2 boites)

❖ Минимальная партия для продажи: 2 коробки (или несколько партий по 2 коробки)

**Consigli per la posa** - Suggestion for laying - Ratschläge für die verlegung - Conseil pour la pose - Советы по укладке

|   |   |   |   |  |
|---|---|---|---|--|
| <p>Viste le caratteristiche della serie si consiglia:</p> <ul style="list-style-type: none"> <li>• Rivestimento</li> <li>• Posa accostata</li> <li>• Colore Fuga (Mapei /Litokol)</li> </ul> <p>Avorio Mapei 100<br/>Ecrù Mapei 100<br/>Malva Mapei 100 /Litokol C.230<br/>Oceano Mapei 100 /Litokol C.400<br/>Vulcano Mapei 100 /Litokol C.400</p> <p>• Pavimento<br/><b>Basic</b><br/>Fuga 2/3 mm</p> | <p>Considering the characteristics of this series we suggest:</p> <ul style="list-style-type: none"> <li>• Wall tiles</li> <li>• No joint laying</li> <li>• Grouting colour (Mapei /Litokol)</li> </ul> <p>Avorio Mapei 100<br/>Ecrù Mapei 100<br/>Malva Mapei 100 /Litokol C.230<br/>Oceano Mapei 100 /Litokol C.400<br/>Vulcano Mapei 100 /Litokol C.400</p> <p>• Floor tiles<br/><b>Basic</b><br/>2/3 mm joint</p> | <p>Im Hinblick auf die Eigenschaften der Serie es empfiehlt sich:</p> <ul style="list-style-type: none"> <li>• Bodenfliesen</li> <li>• Fugenfreie Verlegung</li> <li>• Farbe der Fuge (Mapei /Litokol)</li> </ul> <p>Avorio Mapei 100<br/>Ecrù Mapei 100<br/>Malva Mapei 100 /Litokol C.230<br/>Oceano Mapei 100 /Litokol C.400<br/>Vulcano Mapei 100 /Litokol C.400</p> <p>• Wandfliesen<br/><b>Basic</b><br/>2/3 mm. Fuge</p> | <p>Vu les caractéristiques de la série, nous conseillons:</p> <ul style="list-style-type: none"> <li>• Carreaux pour murs</li> <li>• Pose bord a bord</li> <li>• Couleur de joint (Mapei /Litokol)</li> </ul> <p>Avorio Mapei 100<br/>Ecrù Mapei 100<br/>Malva Mapei 100 /Litokol C.230<br/>Oceano Mapei 100 /Litokol C.400<br/>Vulcano Mapei 100 /Litokol C.400</p> <p>• Carreaux pour sol<br/><b>Basic</b><br/>Joint 2/3 mm</p> | <p>В силу характеристик данной серии рекомендуется:</p> <ul style="list-style-type: none"> <li>• Настенная плитка</li> <li>• Укладка сближена</li> <li>• цвет шов (Mapei /Litokol)</li> </ul> <p>Avorio Mapei 100<br/>Ecrù Mapei 100<br/>Malva Mapei 100 /Litokol C.230<br/>Oceano Mapei 100 /Litokol C.400<br/>Vulcano Mapei 100 /Litokol C.400</p> <p>• Напольная плитка<br/><b>Basic</b><br/>Шов 2 - 3 мм</p> |
|---|---|---|---|--|

**Certificazioni** - Certifications - Certifications - Zertifizierungen - Сертификаты

CERTIFICATION  
**UNI**  
CONFORME ALLA NORMA UNI EN 14411  
P 0032 023

Chic Avorio  
Chic Ecrù  
Chic Vulcano

SANT'AGOSTINO FOR  
**LEED**

Product Certification  
**BUREAU VERITAS**  
Certification  
N. 439

# Chic

Piastrelle in  
pasta bianca

White  
body tiles

Weisscherbige  
fliesen

Carreaux en  
pate blanche

плитка из  
белой глины

Consigli per  
la posa

Suggestion  
for laying

Ratschläge für  
die verlegung

Conseil pour  
la pose

Советы по  
укладке

pag. 12\_13

## colore fuga / joint color

|              |           |
|--------------|-----------|
| Chic Avorio  | Mapei 100 |
| Chic Ecrù    | Mapei 100 |
| Tracce Ecrù  | Mapei 100 |
| Flowers Ecrù | Mapei 100 |
| Nastro Ecrù  | Mapei 100 |

## **Pavimento Abbinato / Matching floor**

|                   |           |
|-------------------|-----------|
| Nature Grey 15120 | Mapei 112 |
| Nature Grey 20120 | Mapei 112 |

## **Pavimento Coordinato / Combined floor**

|            |           |
|------------|-----------|
| Basic Ecrù | Mapei 100 |
|------------|-----------|

## consigli per la posa / suggestion for laying

|        |                                  |
|--------|----------------------------------|
| Chic   | posa accostata / no joiny laying |
| Nature | fuga / joiny 2-3 mm              |



## colore fuga / joint color

|                  |                           |
|------------------|---------------------------|
| Chic Avorio      | Mapei 100                 |
| Chic Malva       | Mapei 100 / Litokol C.230 |
| Brillante Avorio | Mapei 100                 |
| Raso Malva       | Mapei 100 / Litokol C.230 |

## **Pavimento Abbinato / Matching floor**

|                   |           |
|-------------------|-----------|
| Nature Grey 15120 | Mapei 112 |
|-------------------|-----------|

## **Pavimento Coordinato / Combined floor**

|              |                           |
|--------------|---------------------------|
| Basic Malva  | Mapei 100 / Litokol C.230 |
| Basic Avorio | Mapei 100                 |

## consigli per la posa / suggestion for laying

|        |                                  |
|--------|----------------------------------|
| Chic   | posa accostata / no joiny laying |
| Nature | fuga / joiny 2-3 mm              |



pag. 20\_21

25x65 - 10"x25<sup>1/2</sup>"

9,4 mm



**colore fuga / joint color**

|                  |                          |
|------------------|--------------------------|
| Chic Avorio      | Mapei 100                |
| Chic Oceano      | Mapei 100 /Litokol C.400 |
| Brillante Oceano | Mapei 100 /Litokol C.400 |
| Solitario        | Mapei 100                |
| Nastro Oceano    | Mapei 100 /Litokol C.400 |

**Pavimento Abbinato / Matching floor**

|                  |           |
|------------------|-----------|
| Wood Brown 15120 | Mapei 144 |
|------------------|-----------|

**Pavimento Coordinato / Combined floor**

|              |                          |
|--------------|--------------------------|
| Basic Oceano | Mapei 100 /Litokol C.400 |
|--------------|--------------------------|

pag. 24\_25

**consigli per la posa / suggestion for laying**

|        |                                  |
|--------|----------------------------------|
| Chic   | posa accostata / no joiny laying |
| S.Wood | fuga / joiny 2-3 mm              |

**colore fuga / joint color**

|            |           |
|------------|-----------|
| Doga       | Mapei 100 |
| Chic Ecrù  | Mapei 100 |
| Banda Ecrù | Mapei 100 |

**Pavimento Abbinato / Matching floor**

|                   |           |
|-------------------|-----------|
| Nature Grey 15120 | Mapei 112 |
| Nature Grey 20120 | Mapei 112 |

**Pavimento Coordinato / Combined floor**

|            |           |
|------------|-----------|
| Basic Ecrù | Mapei 100 |
|------------|-----------|

pag. 14\_15

**consigli per la posa / suggestion for laying**

|        |                                  |
|--------|----------------------------------|
| Chic   | posa accostata / no joiny laying |
| Nature | fuga / joiny 2-3 mm              |



**colore fuga / joint color**

|                |                          |
|----------------|--------------------------|
| Chic Vulcano   | Mapei 100 /Litokol C.400 |
| Chic Avorio    | Mapei 100                |
| Tracce Vulcano | Mapei 100 /Litokol C.400 |
| Nastro Vulcano | Mapei 100 /Litokol C.400 |
| Metal          |                          |

**Pavimento Abbinato / Matching floor**

|                   |           |
|-------------------|-----------|
| Nature Grey 15120 | Mapei 112 |
| Nature Grey 20120 | Mapei 112 |

**Pavimento Coordinato / Combined floor**

|               |                          |
|---------------|--------------------------|
| Basic Vulcano | Mapei 100 /Litokol C.400 |
|---------------|--------------------------|

pag. 6\_7

**consigli per la posa / suggestion for laying**

|        |                                  |
|--------|----------------------------------|
| Chic   | posa accostata / no joiny laying |
| Nature | fuga / joiny 2-3 mm              |





**01****Codice per fascia di prezzo articoli venduti al mq.**

Code by price bracket - products sold by square meter.

Kennziffer für Preisgruppe Artikel pro Quadratmeter.

Code d'appartenance par classe de prix articles vendus au m<sup>2</sup>.

**01****Codice per fascia di prezzo articoli venduti a pezzo o a comp.**

Code by price bracket - products sold by piece and/or by set.

Kennziffer für Preisgruppe Artikel pro Stück und/oder pro Set.

Code d'appartenance par classe de prix - articles vendus à l'unité ou à composition.

Imballi, colori e misure sono soggetti a inevitabili variazioni. Le informazioni contenute nel presente catalogo sono il più possibile esatte, ma non sono da ritenersi legalmente vincolanti.

Changements de poids, nuances et dimensions sont typiques et inévitable. Les renseignements donnés dans ce catalogue sont le plus possible exacts, sans avoir effet obligatoire.

Verpackungen, Farbe und Masse der Fliesen unterliegen unvermeidlichen Veränderungen. Die im vorliegenden Katalog enthaltenen Angaben sind so genau wie möglich gehalten, sind aber auch rechtlich nicht verbindlich.

Packings, colours and sizes are subject to inevitable variations. The information contained in this catalogue is correct to the best of our knowledge, but it is not construed as legally binding.



**ceramica**  
**SANT'AGOSTINO**

Via Statale, 247  
44047 S.Agostino (FE)  
ITALY - Tel. +39 0532 844111  
Fax Italia +39 0532 846113  
Fax Export +39 0532 844209

[www.ceramicasantagostino.it](http://www.ceramicasantagostino.it)  
e-mail: [info@ceramicasantagostino.it](mailto:info@ceramicasantagostino.it)